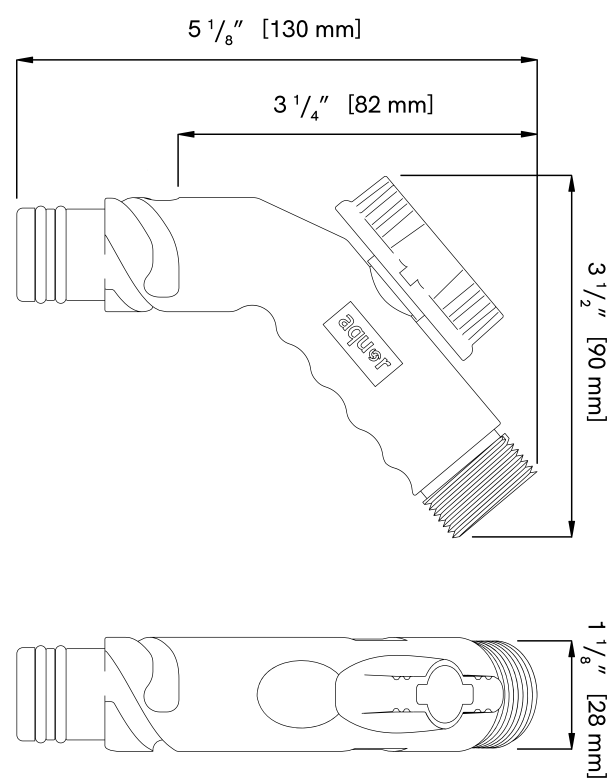


# Removable Faucet Hose Connector

CN-F -BLK



Use the Aquor Removable Faucet with or without a garden hose attached. Regulate water flow via the ball valve shut-off for tasks such as filling buckets. The 70° angled handle provides extra leverage for an easier connection.

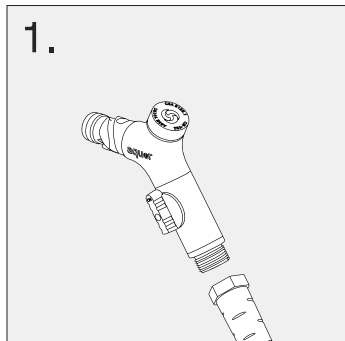
- Compatible with all Aquor hydrants
- Angled for easier leverage
- 3/4" garden hose thread attaches to any garden hose
- Built-in ball valve flow control
- Durable Delrin® polymer and Viton® O-rings

Compatibility	All Aquor hydrants & valves
Color	Slate Gray or Jet Black
Outlet	3/4" GHT (m)
Backflow Protection	No
Operating Temperature	33-140 °F
Operating Water Pressure	25-125 PSI
Flow Rate	6.8 GPM @ 52 PSI
Connector Material	Acetal Resin Polymer
O-Ring Material	Fluorocarbon Rubber
Warranty	5 Years
SKU	CN-F, CN-F-BLK

# Removable Faucet Hose Connector

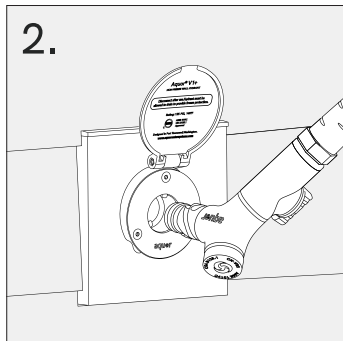
CN-F -BLK

## Connecting to your Aquor Hydrant



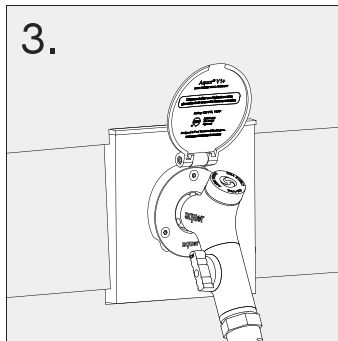
First thread your hose connector onto any hose.

*Comfort Grip Connector shown for demonstration.*



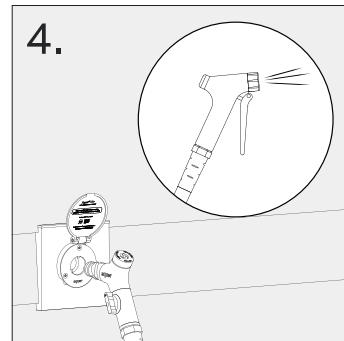
To connect, align the 3 grooves on the connector with the nibs on the hydrant. Gently push in, then twist clockwise.

*Comfort Grip Connector shown for demonstration.*



Once you connect, the valve opens and water flow starts instantly.

*Comfort Grip Connector shown for demonstration.*



Disconnect and depressurize your hose before storing.

*Comfort Grip Connector shown for demonstration.*